

# AGYW Prevention Interventions

T-AHISA meeting April 2023

---

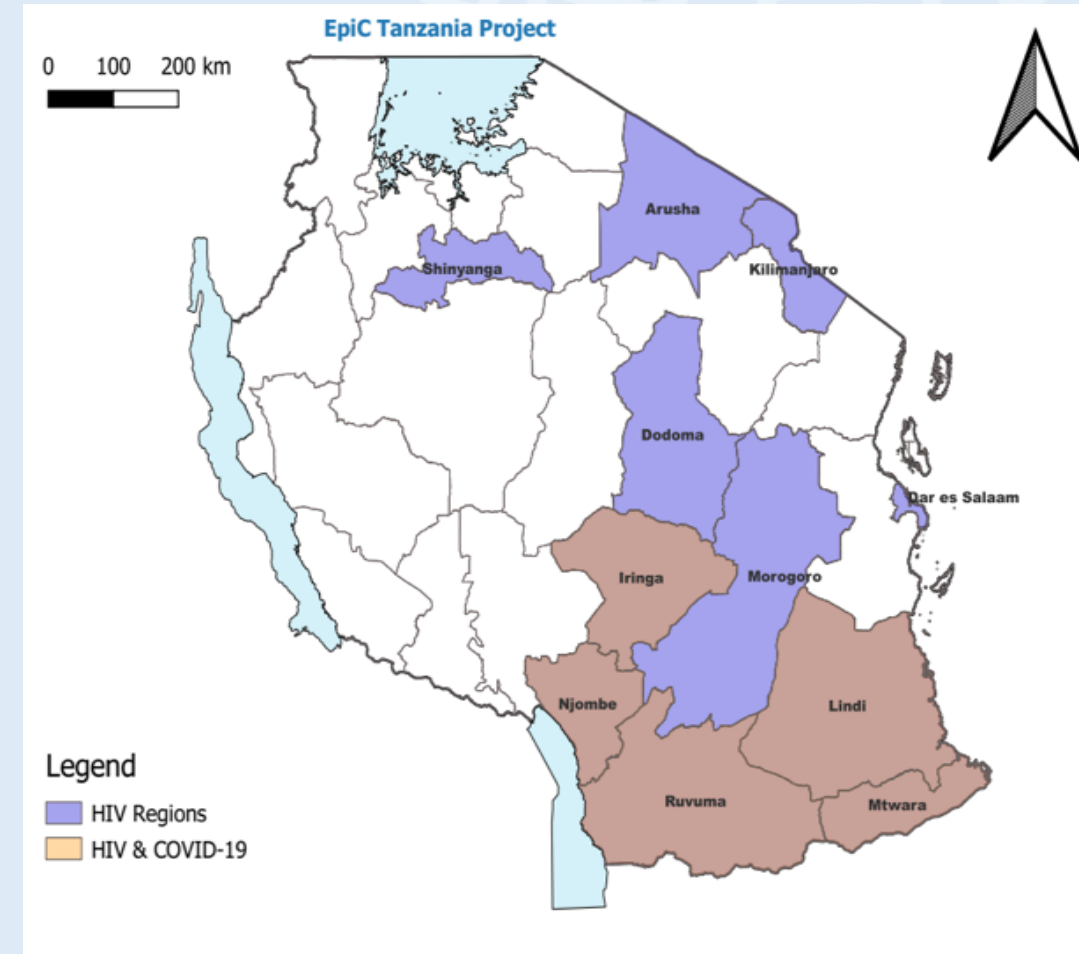
**Debora Frank**

*Senior Technical Officer AGYW – EpiC project*



# EpiC Tanzania – Overview

- Aim: To support Tanzania to attain 95-95-95 goal by providing strategic TA & Direct Service Delivery
- Key & Priority Populations
- Implementation area: 11 regions
- 18 Sub partners, including Open Development
- Funding Sources:
  - COP
  - Family Planning
  - PEPFAR ARPA
  - COVID-19 ARPA
- Key interventions in FY23:
  - HIV
  - COVID-19 Vaccination





# Introduction to AGYW interventions

- Out of school AGYW, 15-24 years who are at risk of HIV infections
- Risk factors includes:
  - Engaged in cross generational sex
  - Having multiple sexual partners
  - Engaged in transactional sex
  - Young mothers
  - Experience GBV
  - No/minimal condom use
- In 11 regions



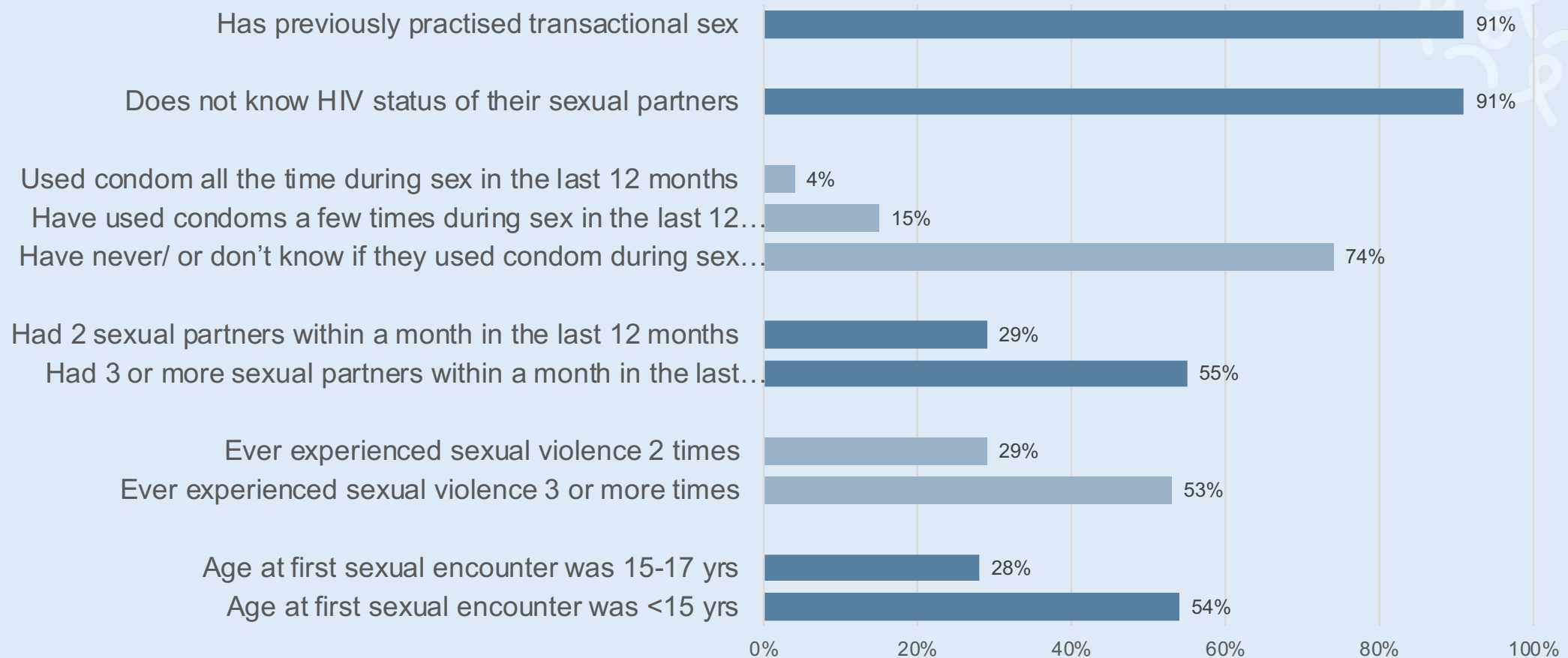
# WHY AGYW?

- HIV/AIDS epidemic disproportionately affects AGYW.
- HIV Prevalence
  - 2.1% among AGYW of 15-24 years compared to adolescent boys of the same age (0.6%) (THIS 2017/17).
- Gender, Age, risk behaviors and economic inequalities being the drivers of HIV infections for this group.



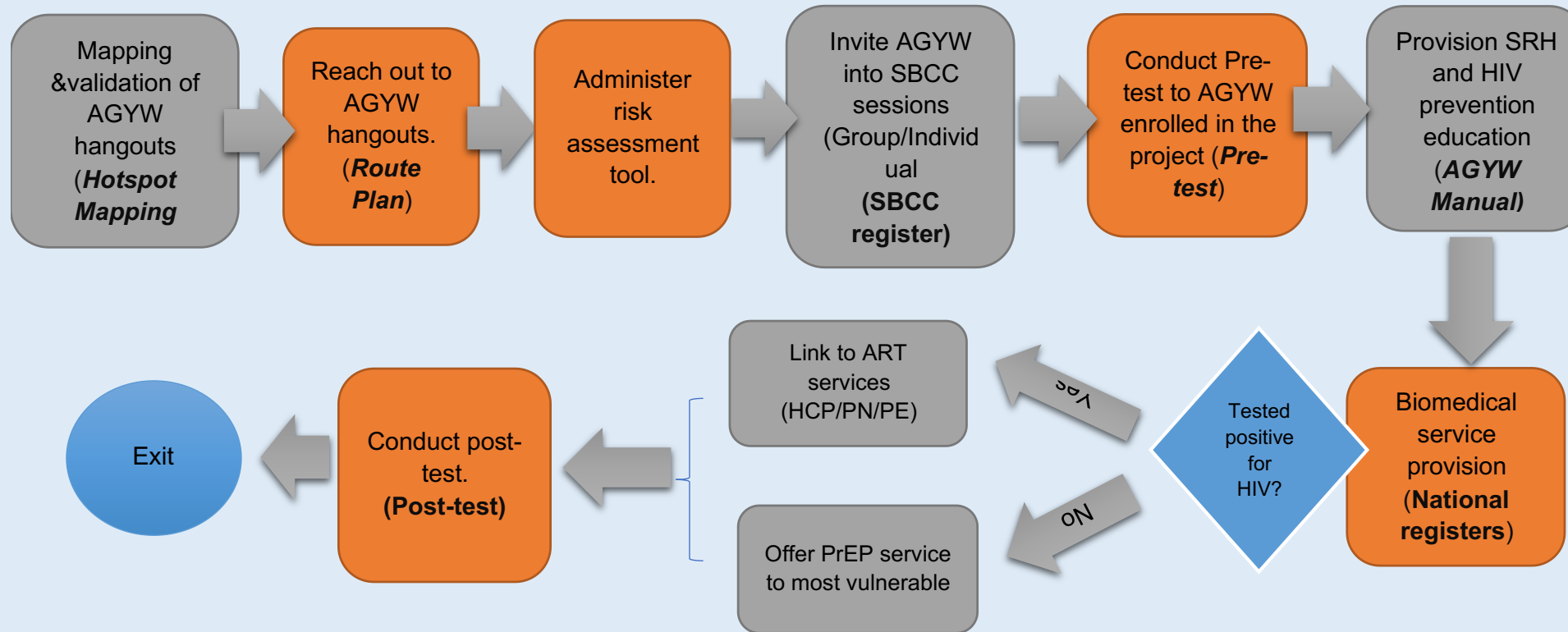
# AGYW Risk Behaviors – A case of Songea DC

*Proportion of the AGYW 15-24 yrs. living in mining and road construction areas in Ruvuma, Mbinga DC, who reports these Behavioral characteristics (N=300)*





# AGYW - Implementation Model



# Prevention Package of services



# Behavioral interventions

**Objective statement:** Strengthen Communities and empowering adolescents through demand side interventions

- Behavioral interventions – addressing the sexual risk behaviors
  - Peer led approach
  - Individual and group session
  - Health information of SRH and HIV
  - Integrated services and linkage



# Behavioral Interventions.....



- Families matter programs
  - Parents and caregivers to adolescent girls 15-19 years
  - Capacitate parents/caregivers with skills on SRH
- Community mobilization to address harmful gender norms
  - Start Awareness Support Action (SASA)
  - Capacitate community on GBV



# Biomedical interventions

- Adolescent friendly services
- Integrated services
- Comprehensive service provision including
  - FP, PrEP, HTS, STI and TB screening, GBV screening and linkage to post violence care and linkage to ART services





# Structural Interventions



## Economic strengthen

- Trainings
- Entrepreneurship skills trainings
- Group formulation and registrations
- Apprenticeships programs

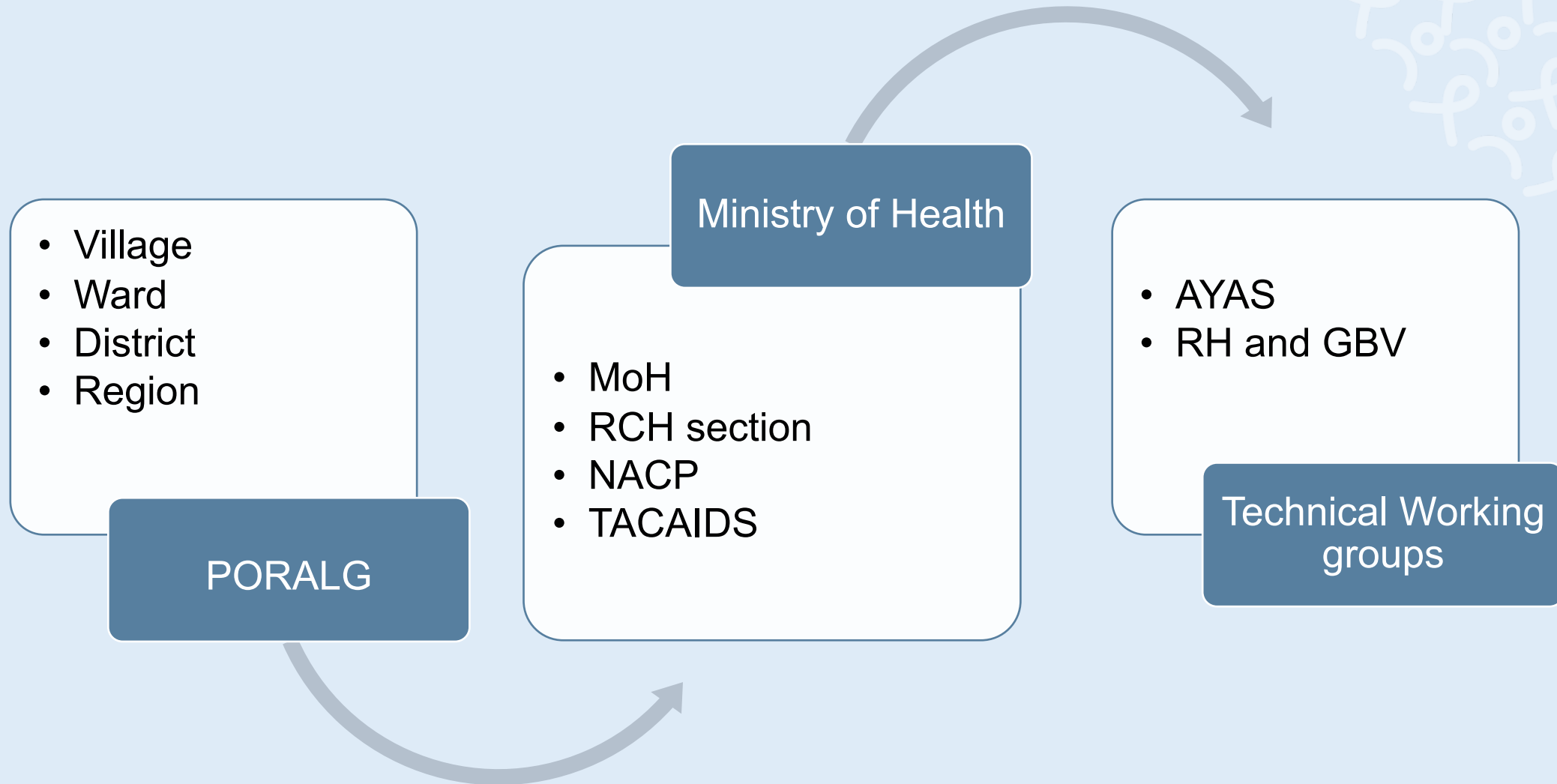
# Structural interventions

Collaborate with other companies

- Economic Strengthen – Okoa New Generation, TANAPA, Care international, Small Industries Development organization (SIDO)
- Orphan and Vulnerable Children's programs (Kizazi Hodari project)

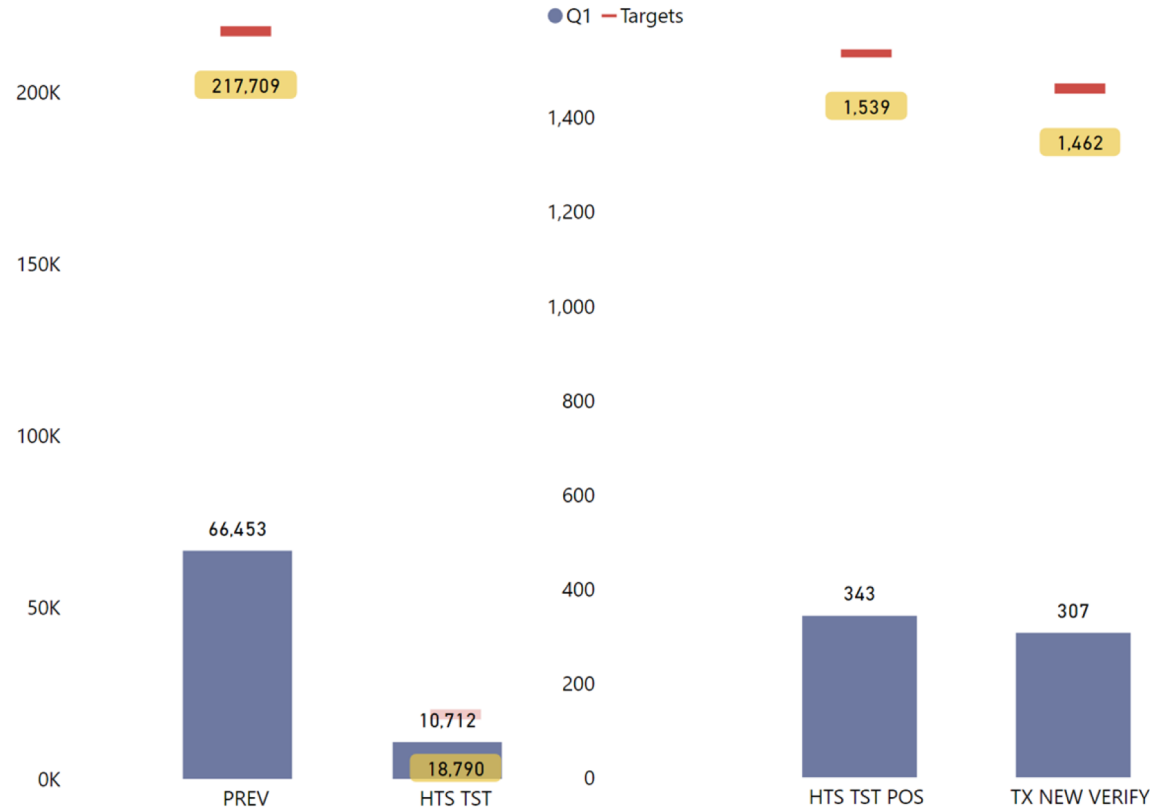


# Structural –Intersectoral coordination



# Cumulative cascade for AGYW – October to December 2022

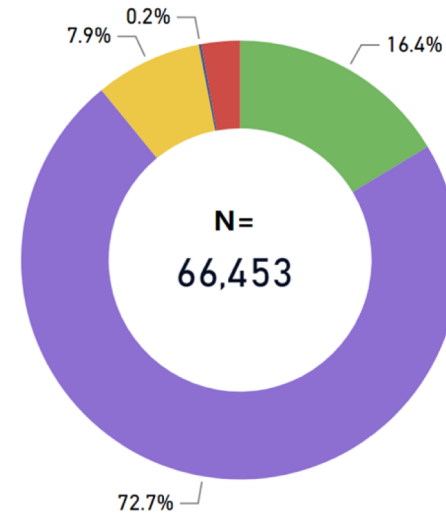
## Cumulative Cascade for AGYW - FY23 YTD



HTS Uptake	Case Finding	Linked to ART
84.0%	3.2%	89.5%

### PREV Disaggs

● Tested/ Referred ● Test not required on ... ● Recently Tested ● Known Positive ● Declined



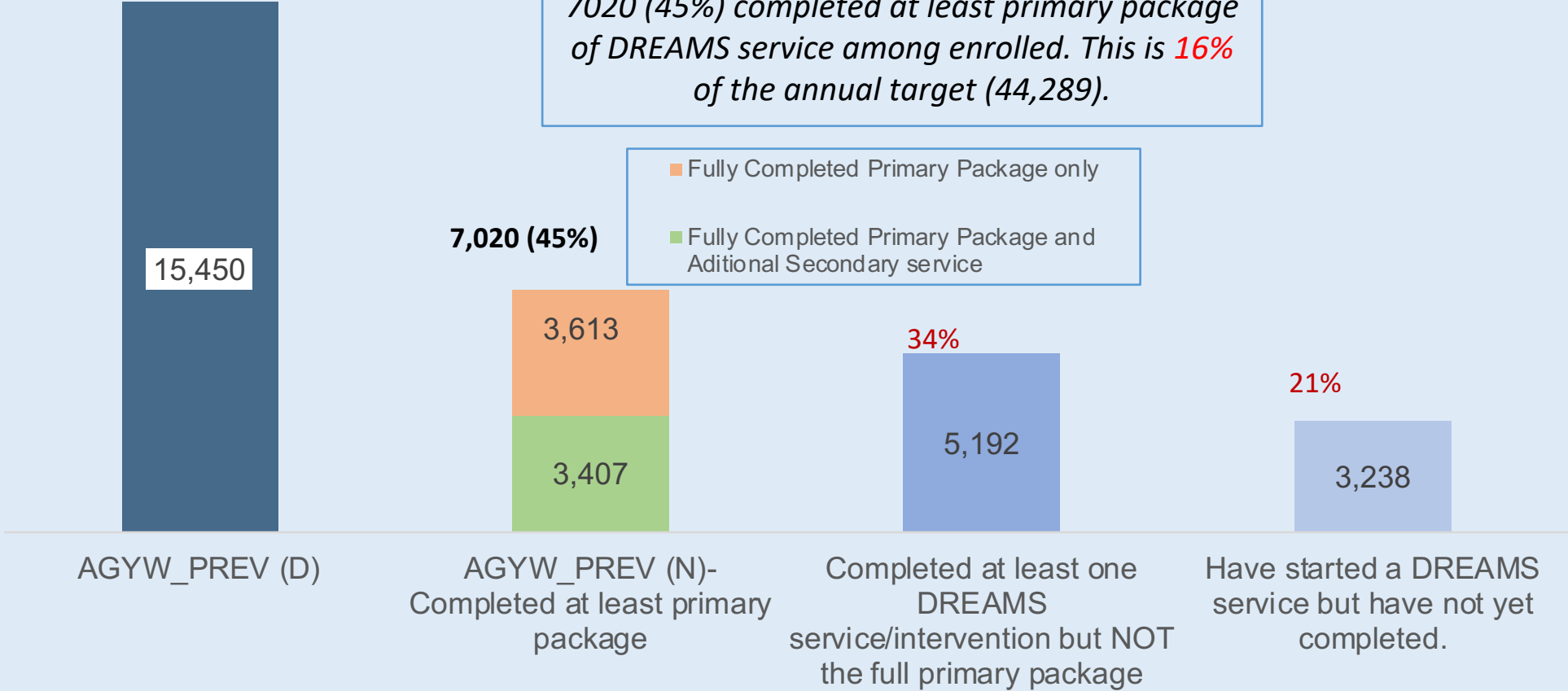
% PREV	% HTS_TST	% HTS_TST_POS	% TX_NEW	% TX_NEW_VERIFY
30.5%	57.0%	22.3%	--	21.0%

# DREAMSLayering of Services - FY23, Q1

15450 AGYW were enrolled in DREAMS in Q1 FY23, which is 30% of the annual target (52,365).

7020 (45%) completed at least primary package of DREAMS service among enrolled. This is 16% of the annual target (44,289).

- Fully Completed Primary Package only
- Fully Completed Primary Package and Additional Secondary service



# How can we work together and use implementation science toward the goal of ending HIV for adolescent and Young Adults in Tanzania?

- Implements results from the scientific researches
- Target the most at risk populations
- Scale up AYA interventions
- Meaningful engagement of AYA
- Use of innovative technology
- Data demand and use





THANK YOU



# Stay Connected



[EpiC Twitter](#)



[EpiC Webpage](#)



[EpiC Facebook](#)



[EpiC YouTube](#)



[EpiC Blog](#)

EpiC is a global cooperative agreement dedicated to achieving and maintaining HIV epidemic control. It is led by FHI 360 with core partners Right to Care, Palladium, and Population Services International (PSI).